

Identify the celebrities from their childhood photos



1. _____



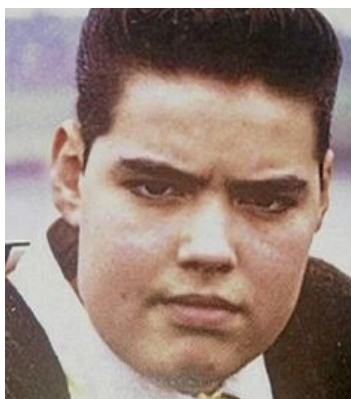
2. _____



3. _____



4. _____



5. _____



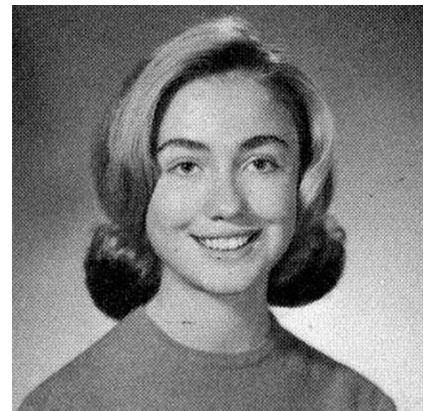
6. _____



7. _____

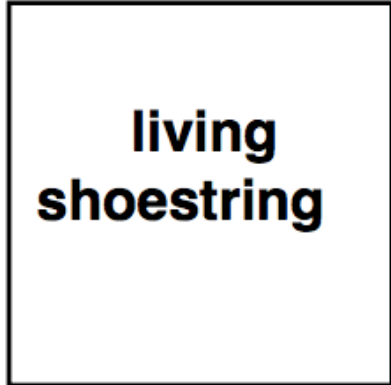
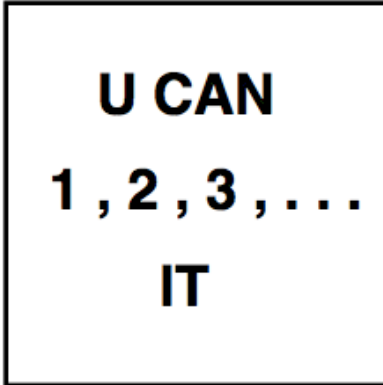


8. _____

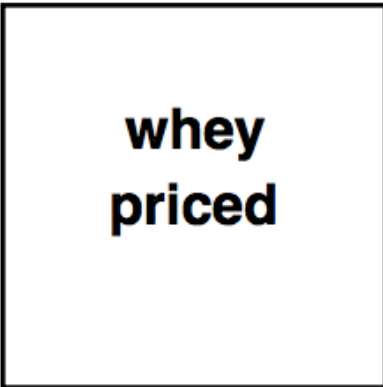


9. _____

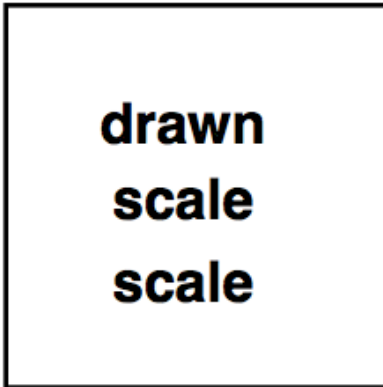
Solve these tricky Rebus puzzles



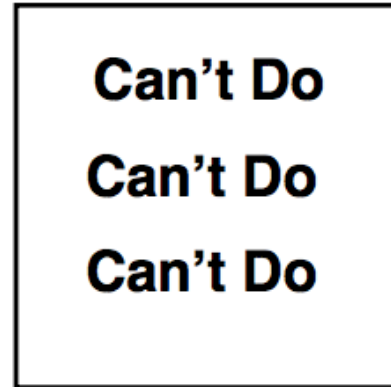
4.



5.



6.



1. _____

2. _____

3. _____

4. _____

5. _____

6. _____



Dream On - Pick the correct multiple choice answer

1. Who was the first person to own a Facebook account?

- A. Tom from MySpace B. Cameron Winklevoss C. Tyler Winklevoss D. Mark Zuckerberg

2. What was the first full length feature film released by Disney?

- A. Cinderella B. Dumbo C. Bambi D. Snow White and the Seven Dwarfs

3. What is Hippophobia a fear of?

- A. Hares B. Hippos C. Horses D. Hip Hop Music

4. Which famous philosopher said 'you can learn more from someone in an hour of play than in a year of conversation'?

- A. Plato B. Aristotle C. Socrates D. Nietzsche

5. Which is the largest planet in the solar system?

- A. Venus B. Neptune C. Jupiter D. Mars

Answers

Celebrities

- 1 - Leonardo DiCaprio**
- 2 - Taylor Swift**
- 3 - Dwayne 'The Rock' Johnson**
- 4 - Beyonce**
- 5 - Russell Brand**
- 6- George Clooney**
- 7 - Morgan Freeman**
- 8 - Ryan Seacrest**
- 9 - Hillary Clinton**

Rebus Puzzles

- 1 - Peppermint Twist**
- 2 - You can count on it**
- 3 - Living on a shoestring**
- 4 - Way overpriced**
- 5- Drawn to scale**
- 6 - No can do**

Multiple Choice

- 1 - D**
- 2- D**
- 3 - C**
- 4 - A**
- 5 - C**